

Keep Investing in QA

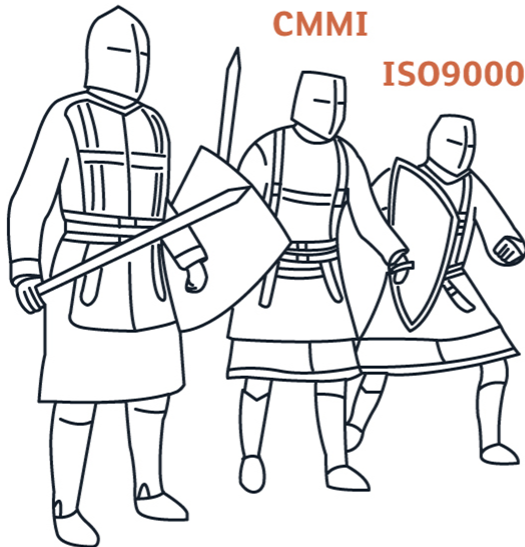
29 June 2017
Alexey Zverev



ISTQB

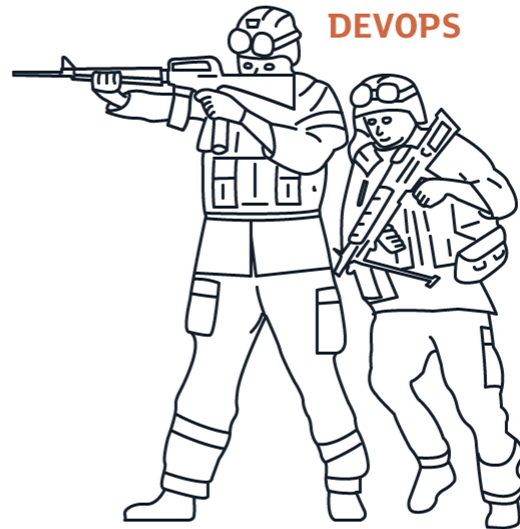
CMMI

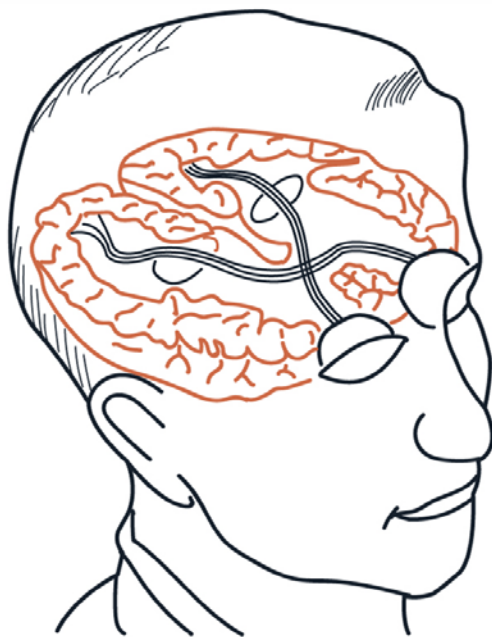
ISO9000



AGILE

DEVOPS





Clear Many Inputs Accurate
Detailed **LEARNING**
High Speed Signal Wide Angle
UNBIASED



True QA Tasks

	Simulate	Explore	Challenge	Communicate	Code
Behavior	X	X	X	X	
Possible Conditions	X	X	X	X	X
Expectations		X	X	X	X
Readiness		X	X	X	

QA Portfolio

EXTENT
CONFERENCE



Environments



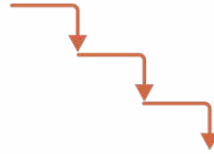
Tools



Management



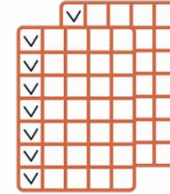
Data



Plan



Team



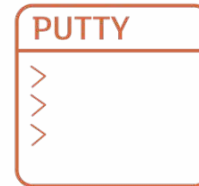
Library



Developers



Business



IT Support

Using This in Practice for Your Investment Analysis

Examples:

1. Environments Approach

2. Test Library Approach

Environments

QA does not control the Test Environment

	Simulate	Explore	Challenge	Communicate	Code
Behavior	X	X	X	X	
Possible Conditions	X	X	X	X	X
Expectations		X	X	X	X
Readiness		X	X	X	

QA owns multiple Test Environments (incl Load Test)

Simulate	Explore	Challenge	Communicate	Code
X	X	X	X	
X	X	X	X	X
	X	X	X	X
	X	X	X	

Test Library

EXTENT
CONFERENCE



VS



Test Library

“Traceability to Requirements” Test Cases Library

	Simulate	Explore	Challenge	Communicate	Code
Behavior	X	X	X	X	
Possible Conditions	X	X	X	X	X
Expectations		X	X	X	X
Readiness		X	X	X	

Exploration Map Style Test Design

Simulate	Explore	Challenge	Communicate	Code
X	X	X	X	
X	X	X	X	X
	X	X	X	X
	X	X	X	

Thank You!